

# Wimbledon Community Forum Agenda

**Date:** Wednesday 20 June 2018

**Time:** 7.15 pm

**Venue:** Wimbledon Arts Space, Compton Rd, Wimbledon,  
London SW19 7QA

For further information please contact:

Email [getinvolved@merton.gov.uk](mailto:getinvolved@merton.gov.uk)

Call: 020 8545 3896

Visit: [www.merton.gov.uk/communityforums](http://www.merton.gov.uk/communityforums)



- 1 Welcome and Introductions** **1 - 4**
- 2 Changes to Waste Collection** **5 - 14**
- 3 Date of next meeting**

Future meetings: all 7.15pm in Wimbledon Arts Space

## OFFICIAL

### Wimbledon Community Forum 20 June 2018 Chair's Report

The meeting was held at the Wimbledon Arts Space, and chaired by Councillor James Holmes. 15 residents attended, as well as seven other Merton Councillors. The Chair welcomed everyone to the meeting, introducing the councillors present at the meeting.

#### **Police Update**

Sgt Marcia Heritage from the Wimbledon Town Centre team provided an update on local policing issues. There are four town centre team officers and the main crime issues are shoplifting, street drinking, and aggressive begging. Outside of the retail centre the main issues are burglaries from sheds and theft from motor vehicles. All the officers will be working throughout the tennis in July

Following the closure of Wimbledon Police Station the best ways to contact the team will be by the website or email (<https://www.met.police.uk/a/your-area/met/merton/hillside>); or use the 101 for non-emergency services; and always use 999 in an emergency.

In response to questions from residents Sgt Heritage said she would speak to the door staff at the Alexandra about customers blocking access to St Marks Road. Sgt Heritage explained that there has not been any change in the Met's approach to drug crime, they usually issue Community Resolutions for possession for personal use and will proactively tackle dealing and have had quite a few arrests recently. Some residents expressed frustration with the 101 line and reporting crimes online and Sgt Heritage said she would feed this back and check what was being done to monitor performance.

A resident raised a concern about the no right turn at the Plough Lane/Gap Road junction being ignored. Sgt Heritage explained that Merton Council enforce traffic movement offences so would pass this on.

#### **Changes to Waste Collection services**

Jeremy Gibson, Neighbourhood Client Officer for Merton Council, and Will Graham from Veolia set out the changes to waste collection taking place in October 2018. The presentation can be found at <https://www.merton.gov.uk/council-and-local-democracy/community-forums/wimbledon-community-forum>. The new system would closely match the one in Kingston which has seen the recycling rate rise to 50% of the refuse collected. There will also be two new services, mixed textiles and batteries. All properties have been assessed and where the new service is not appropriate residents will be offered an alternative. Ahead of the changes in October residents will receive a leaflet explaining the new service and there will be a series of roadshows and coverage on social media.

In response to questions Jeremy explained that households will be given the 180l wheelie bins to begin with to try, but if over time that size is not appropriate smaller bins will be available. If more capacity for dry mixed recycling is needed, then residents can order an additional box but hopefully as single use plastic reduces this may be less likely. Where residents find the new system difficult to follow officers will approach them to help and communications are aimed to be clear and simple to understand.

OFFICIAL

## **OFFICIAL**

Communal bins – Veolia will be working with landlords and housing associations to ensure communal bins are appropriately and consistently labelled. Where those bins are no longer safe to operate then owners will be asked to replace them.

Food waste bags – this were discontinued some time ago due to lack of take up. It is easy to buy bags from supermarkets or residents can use alternatives like newspaper to line the caddies.

Batteries/Textile collection – using plastic bags for this is a simple and easy solution for residents.

Containers being returned – after the containers have been emptied they should be returned carefully to the resident's property. This is emphasised regular to operators.

Waste collection from schools – contract arrangements will need to be checked outside of the meeting.

### **Street cleaning issues:**

Green bags on pavements – waste collected by the street cleaners should be cleared within 24 hours but with the current volume this is sometimes missed. Please report any that have been left longer than a day. There have been no changes in the number of cage vehicles that collect this waste.

Overflowing bins – the frequency of collection depends on how busy the bins are and after a year Veolia has more data on where these issues are. Residents can help by reporting overflowing bins on the website.

Disappearing bins – some bins have been damaged and removed but will be replaced. Jeremy was not aware of any being removed permanently so will check on this.

Weeds on roads – Jeremy will check with Highways on the schedule for this.

Leaf collection – Veolia are currently developing a plan for the autumn which will be discussed and agreed with Merton in August.

Big belly bins – there are no plans for additional big belly bins on the Highway.

Food shops litter – to encourage people not to litter and fly-tip; Merton Council has an enforcement team that issue fixed penalty notices for both offences. In addition to this, Merton Council facilitates regular campaigns through street banners and social media to encourage people to love where they live. If residents witness a fly-tipping incident, then they can confidentially report it to Merton Council for investigation.

### **Love Wimbledon update**

#### **Love Wimbledon update**

Helen Clark Bell gave an update on Love Wimbledon's plans and upcoming events. There is a new Love Wimbledon website <http://lovewimbledon.org/> that has details of all listings as well as a monthly newsletter. There is also a summer guide going out to local households.

**OFFICIAL**

## OFFICIAL

Events coming up include:

- Monthly market – first weekend of the month
- Wimbledon tennis – 2 to 15 July. There will be a big screen and deckchairs on the piazza, ambassadors in the town centre to guide visitors, and St Marks Place will have live music and street food. A head of the event pavements will be jet washed and lamppost banners put up. If there is no tennis on the middle Sunday, the big screen will show the Tour de France.
- 16 July to 3 August – picnic benches will be available in the piazza to give Wimbledon some outdoor seating
- Ride London – 29 July with a street party and live music. There will be road closures and changes to bus routes.
- Arts Fest – September. There will be an arts themed market 22-23 September.
- Wimbledon Bookfest – will be a launch event on 4th October in Merton Arts Space

Keeping the streets clean remains an issue for Love Wimbledon and they have invested in cleaning 2500m<sup>2</sup> of pavement including gum removal. They have also been removing or replacing old street signs with 36 signs and 20 posts removed. There have been ongoing issues with utilities so have been working with UK Power Networks and Thames Water to resolve these.

Love Wimbledon has been working with Sustainable Merton to encourage Plastic Free measures in local businesses and has invested in bee friendly planting, as well as working with Merton Voluntary Service Council to connect local businesses with local voluntary sector organisations.

In response to a question about changing places, accessible toilets, Helen said she was not aware of any space available in Wimbledon station but would be happy to check. Helen also offered to pass on a concern about a florist in Wimbledon Village to the Business Association as this was outside the BID area. Helen also agreed to check with Centre Court about the removal of seating.

### Soapbox

A resident raised concerns about the Development Control Team at Merton Council. Councillor Holden pointed out that there is a national shortage of planning officers, and fees have not risen in line with costs but that team should listen more to local residents. Councillor Kohler said that a Neighbourhood Plan would help get decisions right. Residents expressed concerns about the height and attractiveness of buildings being given permission. Another resident asked if the Design Review Panel could be open to the public, and another asked if councillors could ensure they acknowledge planning comments submitted by residents.

Other issues raised were:

Concrete batching plant on Waterside Way – the development is inappropriate

New school on High Path – too big for site, too close to the main road

Trees in Hartfield Crescent need pruning

Plough Lane development – any update (the latest information can be found at <https://www.afcwimbledon.co.uk/news/2018/july/plough-lane-the-latest-pictures/>)

OFFICIAL

**OFFICIAL**

Councillor Holmes thanked everyone for attending and said that any ideas for engaging a wider audience were always welcome.

**Dates of future meetings:**

Thursday 27 September 2018 at Wimbledon Arts Space

Tuesday 4 December 2018 at Wimbledon Arts Space

Thursday 28 March 2019 at Wimbledon Arts Space

# Environment and Regeneration

## New Waste Collection Service – Autumn 2018

Page 5



Agenda Item 2

# Autumn 2018

There will be changes to the frequency of the rubbish and recycling collection service for residents.

Page 6

## The new waste collection service

- Food waste will be collected every week
- Recycling will be collected on an alternate week schedule:
  - paper and card one week;
  - glass, plastic, tins and cartons the next.
- General (residual) rubbish will be collected every two weeks





# Why is the service changing?

We are introducing these changes because they are:

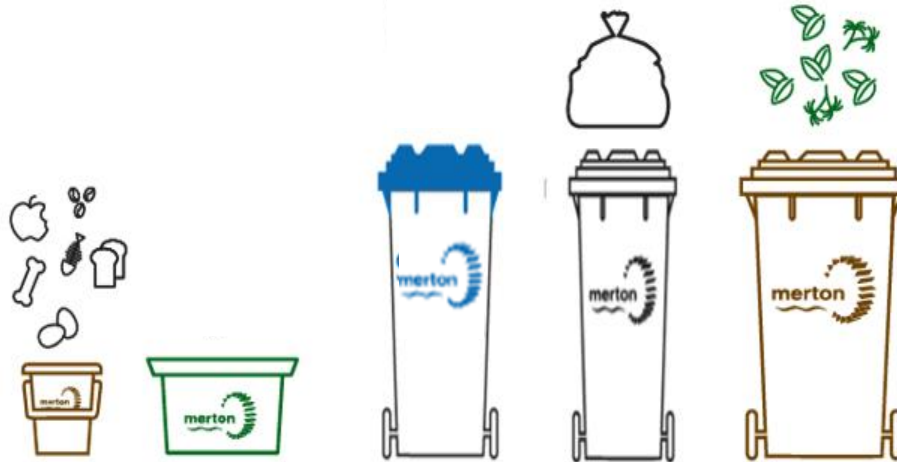
- Page 7
- **cleaner:** fewer bags of rubbish left on the pavement overnight
  - **greener:** encourages recycling, results in fewer vehicle emissions
  - **safer:** waste is contained inside a bin rather than a bag
  - **cheaper:** this service is more efficient and reduces costs



www.alamy.com - A3JNGY2

# New service – Autumn 2018

Page 8



Food	Recycling	Residual	Residual	Garden*
23l	55l	180l	180l	240l

\*Garden bin is an optional paid-for service

\*Garden waste customers can use issued and branded garden bags instead of a wheeled bin

# What new bins will households receive?

We will provide households with:

Page 9

- One wheelie bin for non-recyclable household waste
- One wheelie bin for a recycling stream
- We will deliver your new bins to you before we start the new collection arrangements in October 2018
- In addition to the new wheeled bin, residents will continue to use their existing brown caddies for food waste and green boxes for the other recycling stream



# Example collection schedule

(refer to your leaflet closer to the time for your actual schedule):

Page 10

	Food (Caddy)	General Waste 180ltr Wheelie Bin	Mixed recycling (Glass, Plastic, Cans etc)	Recycling Paper/Card
Week 1	*	*	*	
Week 2	*			*
Week 3	*	*	*	
Week 4	*			*

# If you don't have space to store wheelie bins

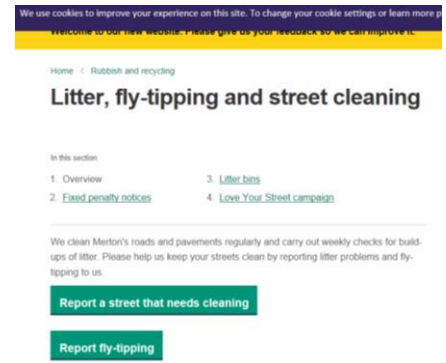
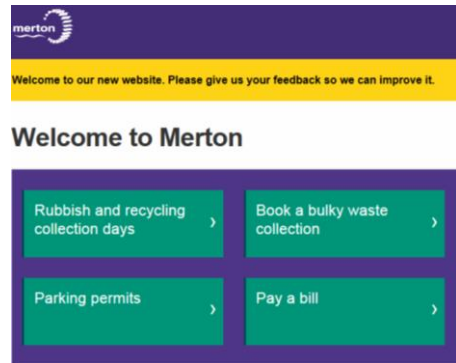
- Flats which currently have a communal bin collection service will continue with this arrangement
- Properties with no front outdoor space or side access will continue to have the blue general waste bag and purple recycling bag (collected alternate weekly)
- Not all properties such as maisonettes will be suitable for wheeled bins and these locations will be individually assessed before the new service commencement

# Reporting a street cleaning or waste collection issue

Report it On-line via our website: <https://www.merton.gov.uk/>

Our website enables you to easily report a range of service requests including:

- Missed recycling or waste collection
- Litter and street cleaning problems
- Abandoned cars
- Graffiti
- Fly-tipping

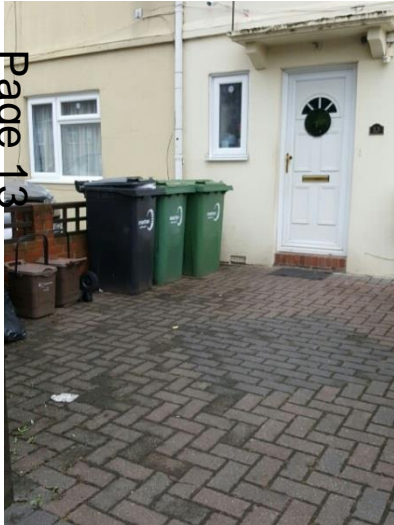


Or if you prefer, please telephone the **Merton Council Contact Centre**: Tel: 020 8274 4902.

The Contact Centre are able to deal with the same range of service requests as the Report It On-line function

# Thank you for your time today

We will communicate further information regarding the new waste collection service throughout the year, this will include information leaflets being delivered to residents, regular website updates and social media posts.



This page is intentionally left blank